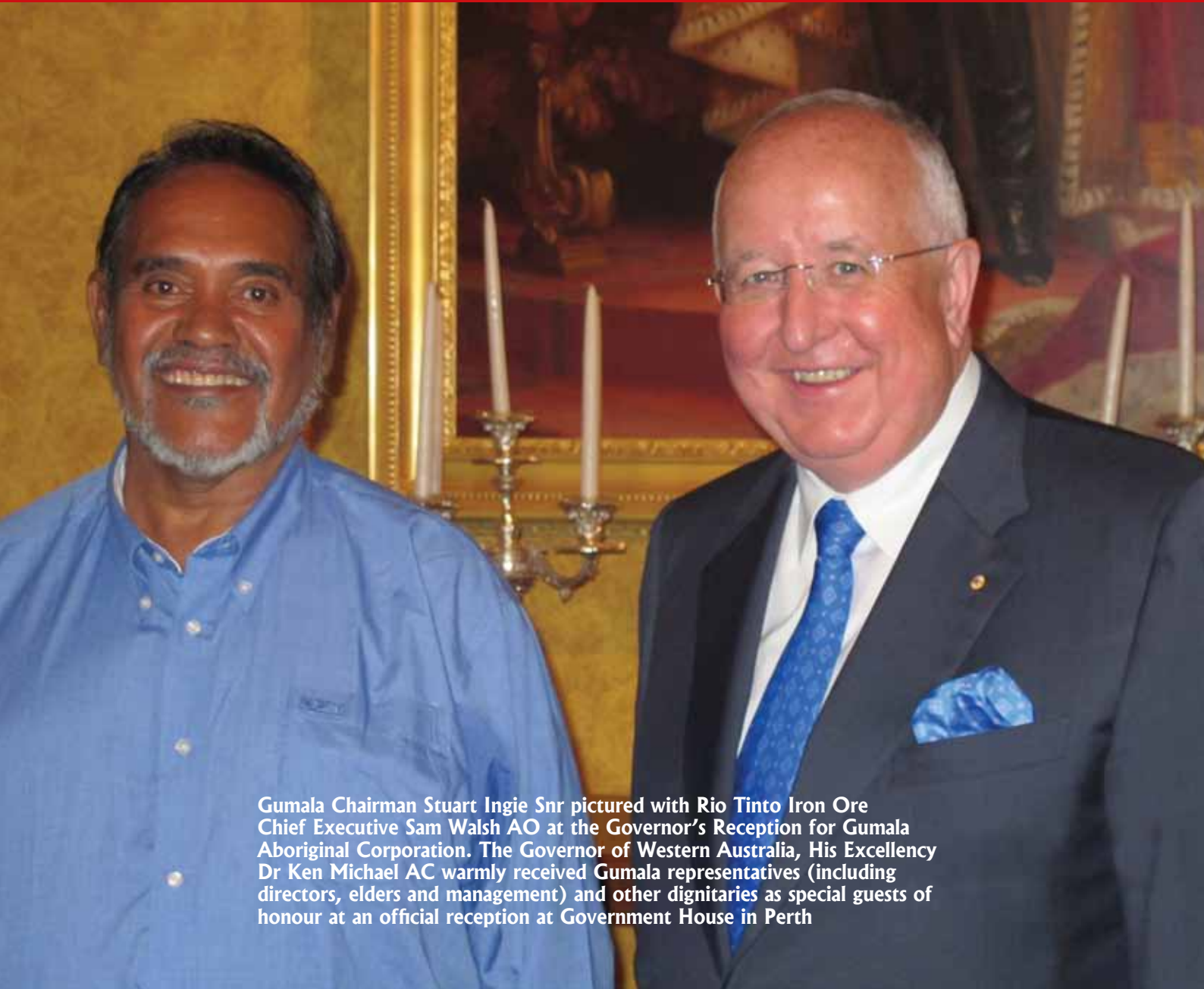


# GUMALA NEWS

COMMUNITY EDITION, APRIL 2011



Gumala Chairman Stuart Ingie Snr pictured with Rio Tinto Iron Ore Chief Executive Sam Walsh AO at the Governor's Reception for Gumala Aboriginal Corporation. The Governor of Western Australia, His Excellency Dr Ken Michael AC warmly received Gumala representatives (including directors, elders and management) and other dignitaries as special guests of honour at an official reception at Government House in Perth



## INSIDE THIS EDITION

- Chief Executive report
  - Tom Price land purchase
  - University of Melbourne and Murdoch University agreements secured
  - A string of agreements and partnerships reached with Pilbara schools
  - Gumala expands workforce and capacity
  - Gumala's education revolution gathers pace
- ... and much more

## Gumala celebrates three successive years of rapid growth, a members' services expansion and improved service delivery

Gumala Aboriginal Corporation has just celebrated its third successive year of rapid growth.

We continue to make great progress in 2011 to advance the strategic goals of our ever-growing and ever-expanding member-based organisation.

It is a great pleasure to be working for Gumala's 1200+ Members and continuing to build one of Australia's leading Indigenous corporations.

It is also a great pleasure to be working side by side with so many people in the local community.

With a professional team of staff and management and a visionary Board of Directors, our organisation continues to set ambitious goals to better serve its Members – the Banyjima, Nyiyapali and Innawonga people.

Over \$11 million in private grant funding is being delivered to our Members in this financial year, assisting them in many ways – included funding for community infrastructure work, school programs, lore and culture activities and an expansion of the health and well being program.

### HOUSING PLANS

Gumala wants 2011 to be the year of "bricks and mortar" with plans to make significant progress on the homeland movement and to commence constructing 150 houses for our Members over the next five years.

Gumala is keen to see more houses built on the traditional lands of our Members, including in Youngaleena, Wakuthuni and Bellary Springs communities.

Gumala has also purchased land in Tom Price and South Hedland, with the construction of homes in South Hedland expected to commence this year.

Gumala is also looking at obtaining land in Onslow, Paraburdoo and other areas of the Pilbara as part of its housing growth plan.

We continue to believe that the best days are ahead of us, and together with the community, Gumala Aboriginal Corporation looks forward to becoming Australia's largest Aboriginal corporation in the not too distant future.



Steve Mav  
Chief Executive  
Gumala Aboriginal Corporation



Below: Gumala Aboriginal Corporation's Chief Executive Steve Mav and Chairman Stuart Ingie Snr celebrate Gumala's 3rd year anniversary of year-on-year achievements, including significant growth, a capacity building boost, land purchases and important university agreements

## Gumala's housing strategy takes a significant step forward with land purchase in Tom Price

Gumala Aboriginal Corporation's housing strategy, which aims to provide affordable housing for our Members, has taken a major stride forward with the purchase of seven individual lots of residential land in Tom Price.

Gumala Aboriginal Corporation (GAC) was the successful bidder for seven lots during an auction that took place in Tom Price in late February 2011.

GAC successfully bid for the lots on behalf of the General Gumala Foundation Trustee, Gumala Investments Pty Ltd.

The lots range from 684–730m<sup>2</sup> each and are located in Warrara Street, Tom Price.

The land acquisition is part of GAC's housing strategy, which involves sourcing land and constructing appropriate and affordable residential accommodation for our Members throughout their traditional homelands in the Pilbara region.

Gumala previously purchased

10 residential lots of land in the Demarchi sub-division, Port Hedland.

### DEPT OF HOUSING FUNDING REQUIREMENT

GAC is currently in the process of negotiating with the Department of Housing in order to secure vital

funding, which will pave the way for GAC to meet construction and other associated costs.

GAC anticipates that the construction of the homes in both Tom Price and Port Hedland will commence in 2011.



Gumala Aboriginal Corporation Chairman Stuart Ingie Snr pictured with Shire of Ashburton CEO Jeffrey Breen on-site at the land purchased in Tom Price. The lots secured in the auction range from 684 to 730 square metres

*"The purchase of this land in Tom Price is an important step in our overall housing strategy objective of building 150 homes throughout the traditional lands of our Members throughout the Pilbara."*

*"Gumala fully supports our Members 'Homeland Movement', and over the past 18 months we have made great gains in terms of housing and infrastructure advancement, including:*

- *The purchase of 7 residential lots in Tom Price;*
- *The purchase of 10 residential lots in South Hedland;*
- *The injection of funds to support the Homeland Movement;*
- *The construction of new homes and associated infrastructure at Wirrilimarra; and*
- *Important upgrades at our Traditional Lore Camps."*

– Gumala Aboriginal Corporation  
Chief Executive Steve Mav

# Murdoch University agreement underlines our commitment to the Traditional Owners health and education needs

A recent agreement secured by Gumala Aboriginal Corporation (GAC) with Murdoch University will result in a comprehensive Health and Education Needs Analysis of Gumala Members and their children. The needs Analysis, which was signed by Gumala and Murdoch in late 2010, has also been made possible thanks to the generous co-sponsorship of Rio Tinto Iron Ore (RTIO).

The Health and Education Needs Analysis will result in a final plan for both the Mobile Health Clinic facility and the implementation of improved school education programs.

Following the formal signing ceremony, which took place in Perth during October, Murdoch University is scheduled to begin Phase I of the Needs Analysis in early 2011, with a final report scheduled to be delivered to GAC by March 2012.

The comprehensive report aims to provide an analysis that will guide longer term strategic planning for enhanced health and education service delivery. It will also review the proposed development of tailored educational programs and resources that could be integrated with the Mobile Health Clinic.

On completion of the report, a detailed proposal for the construction and operation of the Mobile Health Clinic will be presented to Gumala for review.

GAC and Murdoch University wish to thank RTIO for its funding support for the Needs Analysis Phase I.

Project Director of the Health and Education Needs Analysis, Murdoch University's Dr Bruce Walker, said this initial analysis would enable essential planning for the development of the delivery of more

effective health and education for Gumala Members and their children living in the Pilbara region.

"In terms of education, improved levels of school attendance and learning outcomes will be the focus of the strategic development," Dr Walker said.

"With the support of Gumala, Murdoch University hopes to facilitate healing, growth, educational and cultural and economic prosperity in Gumala's communities."

GAC's General Manager, Francois Langlois, said that Gumala's Members and their families living in the Pilbara require improved health and education services.

"The Mobile Health Clinic is part of an overall solution to improve the prosperity our Members and their children," Mr Langlois said.

"However, a Needs Analysis is required beforehand. This will provide us with comprehensive information about our Members and their children so that we can best cater for their health and education needs."



Gumala's General Manager Francois Langlois

During Phase I of the Needs Analysis, data that will be collected includes: current demographics; service provisions across health and education in the Pilbara region; and the health and education status of the population, including child and health indicators and school achievement and attendance.

Murdoch University will also canvass social determinants of health and disease such as water, sewerage, housing, power, education, employment, legal and criminal justice concerns. They will also ask open-ended questions to Gumala Members regarding what other factors impact on their health and what services they require in >>



Gumala's Chairman Stuart Ingie Snr and Murdoch University's Pro Vice Chancellor Facilities Professor Rhonda Marriott

# Partnership between University of Melbourne and Gumala will transform our Wakuthuni community

Gumala Aboriginal Corporation (GAC) is set to develop a whole-of-community infrastructure initiative at GAC's remote community at Wakuthuni, thanks to an innovative partnership with The University of Melbourne.

The initiative involves the design and construction of an early education centre at Wakuthuni, as well as an early childhood education and care program.

Many of the permanent residents living at Wakuthuni, which is located between Tom Price and Paraburdoo, are GAC Members.

This initiative breaks new ground in the systematic development of evidence-based, sustainable education and housing strategies as part of a broad community building exercise.

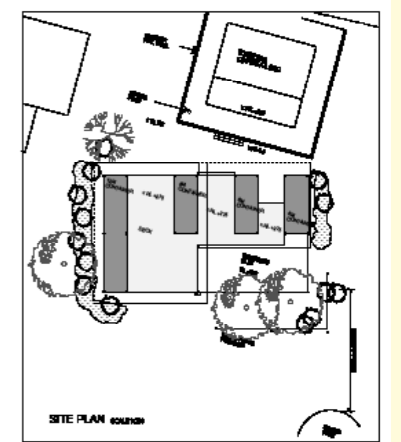
The project will include the involvement of the Wakuthuni community at all stages and aspects of the research process and the

development of project agreements. GAC, the Wakuthuni community and The University of Melbourne will work closely together to deliver outcomes based on an agreed and shared vision.

The program is expected to commence shortly and will be reviewed following the delivery of key objectives prior to the end of the 2010/11 financial year (June 30, 2011).

Throughout the development of this project, it is expected that GAC and The University of Melbourne will explore the development of a long term, integrated partnership.

This partnership will leverage the University's capacity in health, education, Indigenous arts and cultural programs, community infrastructure and housing development.



The whole-of-community infrastructure initiative for the Wakuthuni Community is in-line with one of Gumala's objectives: to provide better housing and education outcomes for our Members and their children

>> relation to health and education.

The Needs Analysis will focus on education in the early years and associated parenting, particularly that of young mothers. It will also focus on disease prevention.

"While primary care of those with immediate needs is important, prevention is vital," Dr Walker said.

"Our analysis of this area will include a review of those disease prevention strategies that are in place and the current and future needs in this area."

Dr Walker added that the specific health and education needs that the



Project Director of the Health and Education Needs Analysis, Murdoch University's Dr Bruce Walker

proposed Mobile Clinic facility will address will be investigated as well.

The following will also take place:

Mapping the territory (data collection from existing sources, health education, community services); Health clinic reporting data; Yarning groups (language and cultural group meetings led by facilitators); Focused interviews with Gumala's Elders and community groups; Interviews with health and education workers; and Focus groups around key issues for clarification (adults and children).

As part of Phase I, a steering committee has been formed. The committee includes representatives of GAC, Murdoch University and Rio Tinto Iron Ore.

# Gumala – working together with our Members and local communities throughout the Pilbara

## The facts about Gumala

- ✓ We are not a government-funded organisation and we do not generally provide cash hand-outs. Instead, we fund the education and training of our Members (Traditional Owners) and their children; assist them with their health and well-being needs; provide important facilities in local communities; have many programs and projects in place that deliver improvements to traditional homelands
- ✓ We are a not-for-profit organisation. We provide funding for lore and culture purposes; we help with funeral expenses, emergency housing needs, and funding for dental, spectacles, podiatry and medication needs as well as critically ill patient support. We have a growing portfolio of projects which include housing and capital works for our communities
- ✓ We are the 7th largest Aboriginal corporation in Australia and have experienced massive growth over the last three years
- ✓ We are the largest Aboriginal corporation in the Pilbara region of Western Australia, with over 1200 Members
- ✓ Together with our associated enterprises, we employ over 100 staff, making us one of the largest employers in Tom Price. We provide real employment and training opportunities for our Members
- ✓ We are currently working in partnership with a growing list of organisations that include Rio Tinto Iron Ore, Compass Group (via our ESS Gumala joint venture), Murdoch University, University of Melbourne, the Dept of Environment & Conservation (through our natural asset, Karijini National Park), the Tom Price Enrichment Centre and various schools throughout the Pilbara and the State
- ✓ We are continuing to grow and expand our organisation. Together with our business arms (Gumala Contracting, ESS Gumala and the Karijini Eco Retreat), we strive to provide jobs for the local community. If you are interested in working at Gumala, contact us!

Helping every generation



move forward together

Working together



with local communities

Just as our name suggests, Gumala (which means all together) is working together with local communities. Headquartered in Tom Price, we are a member-based organisation that provides services to help improve the standard of living and quality of life of the Members we serve.

# Primary school agreements pave the way for improved school outcomes for Gumala kids

The Board of Directors of Gumala Aboriginal Corporation (GAC) has formally approved two agreements which pave the way for improvements in school outcomes for our Members children at primary schools throughout the Pilbara.

The first agreement was signed between GAC and Tom Price Primary School.

The second agreement was signed by GAC and Onslow Primary School. This means that from 2011, funds provided by Gumala for Members kids' schooling are paid directly to the schools.

The two agreements cover a total of 75 children: 26 at Tom Price Primary School and 49 at Onslow Primary School.

Gumala is now looking to secure similar agreements with other schools in the Pilbara, including Paraburdoo and Karratha.

The agreements represent an important streamlining in the funding process, with the funds paying for a range of education costs including school fees, uniforms, shoes, stationery, meals and excursions.

At Tom Price Primary School, it also means that Gumala kids that attend the school will obtain the maximum benefit from the school's Welcome Centre.

Gumala kids arrive at the Welcome Centre in the morning (many of them arrive together on the Wakuthuni school bus), receive breakfast, get changed into their school uniforms and go to their classrooms.

They also get healthy lunches at the Welcome Centre.

"This agreement is very important because it is streamlining the funding process that will result in higher attendance levels," said Tom Price Primary School's Deputy Principal Kath Hart.

"The better the children's attendance, the better their school results will be."



Some Gumala kids beside the Wakuthuni bus: Tasma Cook, Zaykeas Carey, Shakira Carey, Kieran Jones, Kane James and Shanie Jones.

## Schools that Gumala has developed partnerships with:

- Tom Price Senior High School
- North Tom Price Primary School
- Paraburdoo Primary School
- Newman Primary School
- South Newman Primary School
- Hedland Senior High School
- South Hedland Primary School
- Karratha Senior High School
- Karratha Primary School
- Karratha Education Support Centre
- Millars Well Primary School
- Pinjarra Primary School
- Pinjarra Senior High School
- Comet Bay College
- Roebourne Primary School
- Carnarvon Senior High School
- Mt Lawley Senior High School
- St Mary's Star of the Sea Primary School

These additional partnerships

mirror the Tom Price and Onslow primary schools' agreements, but are tailored to suit individual schools, staff and Gumala Members. The various agreements cover school expenses such as school fees, lunches, excursions, country week and cadets. Each agreement varies depending on the school.

# Gumala's education revolution strengthens, education funding opportunities for our

Gumala Aboriginal Corporation is extremely proud of our Members and our Members' children who are receiving quality educations thanks to their dedication, highly supportive families and Gumala's education funding assistance.

Funds that Gumala has expended on the educations of our Members and their children more than doubled in the 2009-10 financial year when compared to the previous financial year, and is expected to more than double again during the 2010-11 financial year.

Such has been the massive growth of this funding category, that Gumala has established a dedicated Education Office, as well as additional Members' Services Unit (MSU) staff to help manage and process the large volume of applications.

Here is a very small taster of some of the many education success stories of our Members and their kids:



Layneisha Sgro, age 13. Layneisha attends Presbyterian Ladies College (PLC) in Perth. Layneisha was accepted into the The Indigenous Youth Leadership Program (IYLP) at PLC, which is one of Western Australia's top girls schools (Gumala provides additional funding to assist with other costs associated with her education).



Left to right: Marika Parker, Year 8 and her sister Ivette (Louise) Parker, Year 10; Heidi Parker, Year 10; and Peta Drummond, Year 8. Courtesy of Post Newspapers. Photo by Paul McGovern. Post Newspapers, February 5 2011.



Wesley College student Kale Robinson.



Shaka Cook is currently studying at the prestigious National Institute of Dramatic Art in Sydney. The NAIDOC Award winner (Artist of the Year, 2010) holds ambitions to become a professional actor, inspire his people and educate others about Aboriginal culture.



Todd Jones pictured in his Valedictory cloak for graduating from Year 12 at Tom Price Senior High School.

# with a strong push to provide maximum Members and their children

Did you know that Gumala Aboriginal Corporation (GAC) provides the following education funding opportunities (paid by GAC directly to the educational institutions) for our Members and their children?

\$2000 available per annum to all Kindy - Year 6 Primary Students registered in Gumala's Education Unit

\$2500 available per annum to all Year 7 - Year 12 high school students registered in Gumala's Education Unit

\$2500 available to all adult tertiary students registered in Gumala's Education Unit

\$10000 available per annum to successfully registered scholarship students



Gumala Member Nicholas (Nick) Wortham has completed a Bachelor of Social Science with a double major in Anthropology and History at Curtin University.

Nick plans to complete Postgraduate studies and find employment in the areas of Native Title and Cultural Heritage.



Asten Condon is currently studying a Bachelor of Nursing degree at Curtin University.

Keely Tucker and Kiet Cook studied at Ellenbrook Christian College in 2010. In 2011 Keely and Kiet enrolled to study at La Salle College and Guildford Grammar respectively.



Zoey Lethbridge graduated from Year 12 at Karratha Senior High School. At the presentation she was honoured with a special award from the Gumala Mirnuwarni Education Project.

Angus McHenry and his mother Franzis Robinson study at Guildford Grammar and Curtin University respectively. Franzis is completing a Bachelor of Applied Science (Indigenous Community Health).



Kasey Byrne is completing an Enrolled Nurse - Registered Nurse Conversion Course at Curtin University.

# Gumala succeeds in “capacity building” measures, with key appointments and efficiency improvements

Gumala Aboriginal Corporation has bolstered its personnel numbers significantly in recent months, as part of our overall strategy to:

- (i) implement significant “capacity building” measures, in order to maximise the efficient and effective delivery of Members Services; and
- (ii) provide employment opportunities for our Members

and the local community.

As part of Gumala’s “capacity building” strategy, we have created an additional Members’ Services Unit (MSU) office and have created three dedicated divisions within the MSU.

Each division provides Members’ Services for each of the three language groups to which our Members belong.

## Key appointments and promotions in late 2010 and early 2011 include:

Matt Selby, Finance Manager

Sarah Moore, Human Resources Manager

Lisa Shields, MSU Team Leader

Keith Pearson, Consultant, Civil Engineering and Town Planning

Hannah Newnham, Education Coordinator

Ronwyn James, MSU Acting Team Leader

Samantha Way, Joanie Mummery, Karen O’Brien, Eleanor (Eli) Lukale and Debbie Eatwell – MSU Officers

Gina Leckie, Administrative Assistant

Penny Body, Personal Assistant

Beverly Gill, Education Support Officer



Finance Manager Matt Selby is a highly qualified and experienced Chartered Accountant.



Human Resources (HR) Manager Sarah Moore has 10 years of HR experience and a Human Resource Management degree.



MSU Team Leader Lisa Shields. One of Lisa’s key goals is to make a strong contribution to the operational capabilities and efficiencies of the MSU, which will ultimately result in better services for Gumala’s Members. Lisa is also a Shire of Ashburton councillor.



Civil Engineer and Town Planner Keith Pearson has been recruited by Gumala Aboriginal Corporation on a consultancy basis. Keith has more than 35 years experience in civil engineering and town planning. He was formerly the Deputy City Planner for the City of Melbourne, and, more recently, was Chief Executive Officer for the Shire of Ashburton.



Ronwyn James (above, right) was recently promoted to the position of MSU Acting Team Leader. Ronwyn is also a Gumala Member. Last year, Ronwyn and fellow Traditional Owner Greg Tucker (above) both celebrated their 10-year-anniversary of employment with Gumala.



# New Trainees appointed, as Gumala begins rolling out its 2011 Traineeship program

Gumala Aboriginal Corporation’s 2011 Traineeship program is now in full swing, with plans to identify and employ several new Trainees this year.

Three new Trainees have been appointed in early 2011, with many more set to follow throughout 2011. Gumala’s 2011 Traineeship Program includes the following Trainee opportunities: Members’ Services, Administration, Reception, Lore and Culture, Gumala Radio, Gumala Contracting and a Trainee Manager opportunity.

Gumala is also working in partnership with other organisations, including Ashburton Aboriginal Corporation and the Indigenous Land Council Traineeships, to provide additional Traineeship opportunities.

Three Trainees, Kieran Smirke, Nathan Black and Garrum Parker commenced Traineeships in early 2011.

Both Kieran and Nathan will be on Gumala Aboriginal Corporation’s payroll but will be based at the offices of Ashburton Aboriginal Corporation.

Garrum is working as a Trainee Ringer at Roebuck Station. Garrum grew up on Peedamulla Station, where his grandparents Trevor and Doris Parker have lived for about 40 years. His grandparents run Peedamulla Station, and Garrum’s grandfather has taught him everything he knows about how to run a station. The young teenager’s objective is to gain as much experience as possible at Roebuck Station, and one day take over the running of Peedamulla Station.



New Gumala Trainees (left to right) Kieran Smirke, Nathan Black and Garrum Parker

# Gumala Member represents Australia at UN Commission

Gumala Member, Niyiyipali Traditional Owner and mother of two, Jahna Cedar, has been honoured to represent Australia at this year’s United Nations Commission on the Status of Women.

Jahna, who grew up in Marble Bar and currently lives in South Hedland (where she runs her own consultancy business), said her aim in attending the New York meeting was to bring an Indigenous perspective to the table. Jahna was chosen as the Indigenous Australian delegate at the

forum (which is the global body for the promotion of equality between men and women), together with two

other Australian women.

The Minister for the Status of Women, Kate Ellis, said she was delighted that Jahna had been selected from such a strong field of community applicants.

Ms Ellis said Jahna had made a significant contribution to her community and to the welfare of women. She added that Jahna brings to the table personal knowledge of the barriers women can face in the community, having already done much work to support Indigenous women and girls.



Jahna Cedar

# Gumala expands its Members' Services operations

As part of Gumala's Members' Services Unit (MSU) expansion, we have opened a new MSU room in our Tom Price office. We now have two MSU Teams – one team (MSU 1) takes care of Innawonga and Niyiyapali Members' applications and enquiries, while the other team (MSU 2) takes care of Banyjima Members' applications and enquiries.

One of Gumala's key objectives is to optimise the service delivery of our programs to our Members. These programs include health programs (health and well-being, ancillary health and critical ill patient support), development programs (primary education, secondary education, tertiary education, scholarship assistance, education assistance, computer support, and sport & recreation), lore & culture and emergency housing.

*"The MSU has expanded incredibly, as have the programs we provide for the Members. It is critical that Members' applications are processed quickly and accurately, and this has now become a reality.*

*"At the MSU we really do strive to give our Members the best possible quality service. Both on the phones and behind the scenes we do an enormous amount of work to ensure we provide the Members with the level of service they expect.*

*"The division of the MSU along language groups, as well as the employment of additional staff, has led to major efficiency improvements.*

*"Providing quality of service to our Members is our number one goal. It's what we come to work for every day."*

**– Gumala Aboriginal Corporation's Members' Services Manager**



# Lore ceremonies and lore camp upgrades take place at traditional lore grounds

Gumala Aboriginal Corporation continues to fully support the culture of our Traditional Owners through our Lore and Culture programs, which include Lore and Culture Travel Assistance to assist with expenses associated with travel to Lore ceremonies.

## LORE TIME CEREMONIES

Several traditional Lore ceremonies took place between December and February at Gumala's lore camps at Cane River and Wirrilimarra, as well as other nominated sites throughout the Pilbara.

Over 20 'young boys' (children of Gumala Members) went through, becoming 'young men'. With the families of all of the young men attending the ceremonies, hundreds of Traditional Owners were at the Lore ceremonies over the summer.

The Lore Camp upgrades were completed by Gumala Aboriginal Corporation before Lore Time began, so everyone was able to enjoy the improved facilities, including fresh running water.

As usual, Gumala provided grants for travel and food expenses.

The Gumala Management wishes to acknowledge all of our Elders who were there providing guidance and assistance during Lore Time.

## LORE CAMP UPGRADES

In line with Gumala's commitment to our Lore Camps at Wirrilimarra, Cane River, Bellary Springs, Wakuthuni and Youngaleena, Gumala has commenced Lore Camp upgrades.

The first Lore Camp upgrades were carried out at Wirrilimarra and Cane River during the summer of 2010/11, including the laying of water pipes, fencing and ablation

blocks installations.

Gumala's other Lore Camps, located at Bellary Springs, Wakuthuni and Youngaleena, are all scheduled to be progressively upgraded in time for Lore Time in 2011.

An integral reason for the Lore Camp upgrades centres around health and safety. Hence a critical part of the upgrades involves the provision of fresh running water.



*Image taken during a traditional Lore ceremony at one of Gumala's Lore Camps. Surrounding Leroy Cook are his mother and father Maisy and Brendon, as well as Dawn Hicks and Vynka Mallard*



*Gumala's Lore Camp upgrade program, which involved Gumala Members assisting in the majority of the works, consisted of infrastructure upgrades including the laying and installation of water pipes, fencing and ablation blocks installation.*

## Important renal health discussions held

Gumala Aboriginal Corporation recently had the pleasure of the visitation of Dr Maggie Haertsch from Combined Universities Centre for Rural Health. Dr Haertsch met with Gumala's Projects Officer (Community Projects), Rebecca Harkin, at Gumala's Tom Price office to discuss renal health needs in Tom Price.

"Dr Haertsch is carrying out a diabetes and kidney disease prevention and management plan for the Pilbara Aboriginal Health Forum," Rebecca said.

"Our meeting was very useful because we exchanged a significant amount of information and can now look forward to working with her further in the future.

"We are working together to research and develop the best possible renal health model for our Gumala's Members. This includes liaisoning with stakeholders. Ultimately we want to implement a renal health proposal for Tom Price that will best benefit the membership."



Gumala's Project Officer (Community Projects), Rebecca Harkin pictured with Dr Maggie Haertsch from Combined Universities Centre for Rural Health

## Wakuthuni upgrades

Gumala has undertaken a scope of works to improve Wakuthuni's community centre and clinic. Hopefully the implementation of these important works will occur in the very near future.

## Karijini remediation works

The remediation works at Karijini Eco Retreat (KER) were recently completed. The works were being undertaken by Gumala Aboriginal Corporation in conjunction with the Western Australian Department of Environment and Conservation (DEC) in order to meet proposed recommendations from DEC relating to vehicle circulation, parking and site rehabilitation issues that were first identified in an external sustainability audit and follow-up assessment of the site in 2008.

The main objective was to halt and reverse site degradation and corresponding decline in site amenity owing to a range of site development and management issues.

The next proposed phase of the remediation works include: scratching of surface to allow re-germination of native plants; brushing where applicable; form a slight sloping from tent where appropriate; form gravel pathways where designated; and move rocks to delineate road. Gumala is currently in negotiations with a contractor to undertake the works. Once the contract has been finalised the works will commence shortly thereafter.



Gumala Member Kevin Eckerman of Binbirri Contracting discussing the next proposed stage of KER remediation works with Gumala's General Manager Francois Langlois

## Plans for Youngaleena and Bellary Springs

The WA Department of Local Government has identified Youngaleena and Bellary Springs for possible service/infrastructure improvements.

Gumala took Brad Smith, Senior Consultant, Cam Management Solutions, to visit Youngaleena and Bellary Springs late last year. Mr Smith is preparing "Scopings and costings of local government related services and infrastructure in remote Aboriginal Communities in the Pilbara." Mr Smith will now report to the government on his findings. Gumala is willing to assist in any possible way to ensure these improvements come to fruition.

## Gumala – working together with stakeholders and the local community

Gumala has a close and strong working relationship with:

### Rio Tinto Iron Ore

- The Yandi Land Use Agreement ensures that the income and in-kind support received directly and indirectly from RTIO is delivered to the Traditional Landowners.

This agreement is reviewed every five years, with each of the co-principals coming away from the most recent review with a statement that reiterated that Gumala and RTIO have an excellent working relationship. More importantly RTIO shares Gumala's overall goal of improving the health, well-being and prosperity of the Traditional Owners.

- Quarterly Monitoring and Liaison Meetings between the two organisations continue, as do the annual Yandicoogina (Yandi) mine visits. These visits give Gumala's Directors and Managers the opportunity to have a first hand look at the mine's current iron ore operations as well as expansion plans.
- Gumala also assists RTIO with Land Survey and Monitoring.

### Compass Group

- via our ESS Gumala Joint Venture

### The Western Australian Department of Environment and Conservation

- through Karijini National Park

### Hospitality Group

- its subsidiary, Ecomodation, manages Karijini Eco Retreat

### Shire of Ashburton

- partnerships such as NAIDOC 2010 joint sponsorship

### Ashburton Aboriginal Corporation

- via Work Start and other training and traineeship initiatives

### Murdoch University

- via the Health and Education Needs Analysis agreement

### University of Melbourne

- the whole-of-community infrastructure initiative at Wakathuni community

### Various schools throughout the Pilbara and WA (see page 7)

### The Tom Price Enrichment Centre

Gumala is a proud supporter of the centre, with many Gumala children attending the centre on a regular basis. Late last year, Gumala donated its time and skills to create the design of the centre's main signage at the front of the building.

## Playground upgrades

In 2011 Gumala is planning to install new recreation structures and upgrades at each of our communities, including: rubber flooring for the playground areas at each community; the installation of backboards for the basketball courts at Youngaleena as well as repainting of the court. We are investigating the possibility of building a skate park at Wakuthuni.



The basketball courts at Youngaleena will be upgraded by Gumala. We also plan to carry out upgrades at all our communities' playgrounds



Gumala Radio Broadcaster John 'Tadam' Lockyer

**GUMALA RADIO**

Bellary 101.7 FM  
 Roebourne 102.9 FM  
 Onslow 101.7 FM  
 Wakuthuni 104.9 FM  
 Youngaleena 102.1 FM  
 Tom Price 106.5 FM  
 Paraburdoo 102.9 FM

Your community radio station. Tune in now!

## Gumala Radio draws fans from afar

Annette Geerling from Victory Downs Station writes:

"In appreciation of your radio show as we live on Victory Downs Station, in the Northern Territory, on the border with South Australia.

"The music selections are magnificent. I recommend others to tune in and thought I would send this note of thanks for your 'consideration, choice and support for us in the bush'. The song about 'the big rain coming' really touched me.

"Congratulations and a big thank you. Yours 'in the bush'. Annette Geerling, Victory Downs Station."



Commemorating the fourth anniversary of the passing of well known and much loved Volunteer and Teacher Anna Stibi (10-02-1958 to 20-03-2007). Gumala Aboriginal Corporation and other organisations based in Tom Price were honoured to contribute to the funding of the memorial plaque and tree (located at Tom Price Senior High School).



**GUMALA**  
Aboriginal  
Corporation  
ICN 2744

Head Office: 1 Stadium Road  
Tom Price, Western Australia

Phone: 1800 486252  
(1800 GUMALA)

Postal Address: PO Box 61  
Tom Price, Western Australia  
6751

Fax: (08) 9188 1846  
Email: [gac@gumala.com.au](mailto:gac@gumala.com.au)  
Website: [www.gumala.com.au](http://www.gumala.com.au)